

SURVEY UNIT,

MINISTRY OF HOUSING AND ENVIRONMENT
Ameenee Magu, Maafannu, Male', 20392, Maldives.
Office (PABX): +(960) 3004300, Fax: +(960) 3004301
Email: survey@mhe.gov.mv
Web: www.mhe.gov.mv



CONTROL POINT DETAILS	Station Number PSM - 5292
Coordinate Information	
Geodetic	Grid
WGS 84	UTM Zone 43
Lat: 1° 49' 5.6418"	E: 322297.970
Long: 73° 24' 8.805"	N: 201048.800
Ellp Height: -88.95	Orth Height: +1.505

Date: 13 June 2012

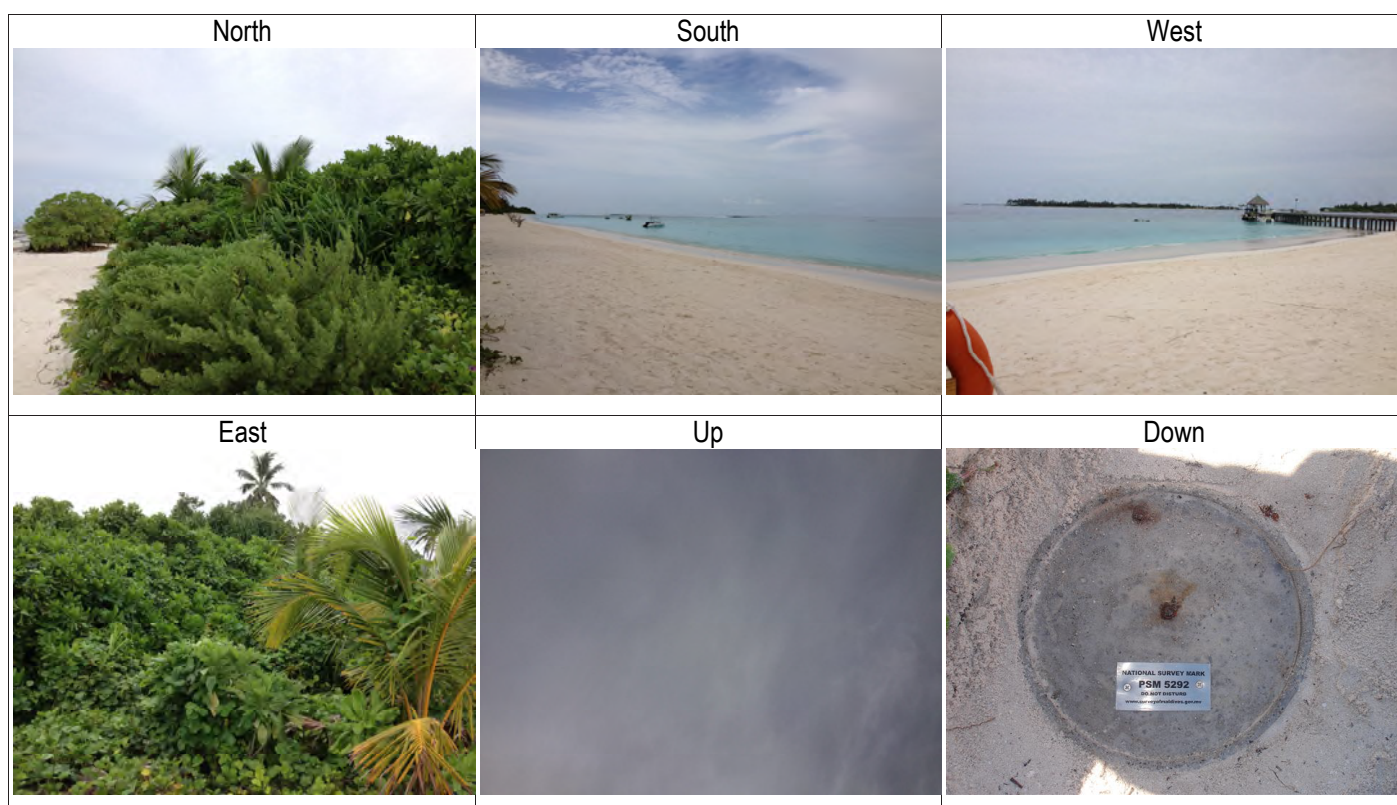
Monument description & method of survey:

- Monument Type A with reference to urban area used as mentioned in the guide line.
- Control stations were fixed using primary closed loop traverse around the island.
- 3 permanently marked station were fixed by GPS

General site condition & access:

Station was fixed in open areas with minimum amount of vegetation and obstacles.

Owner:



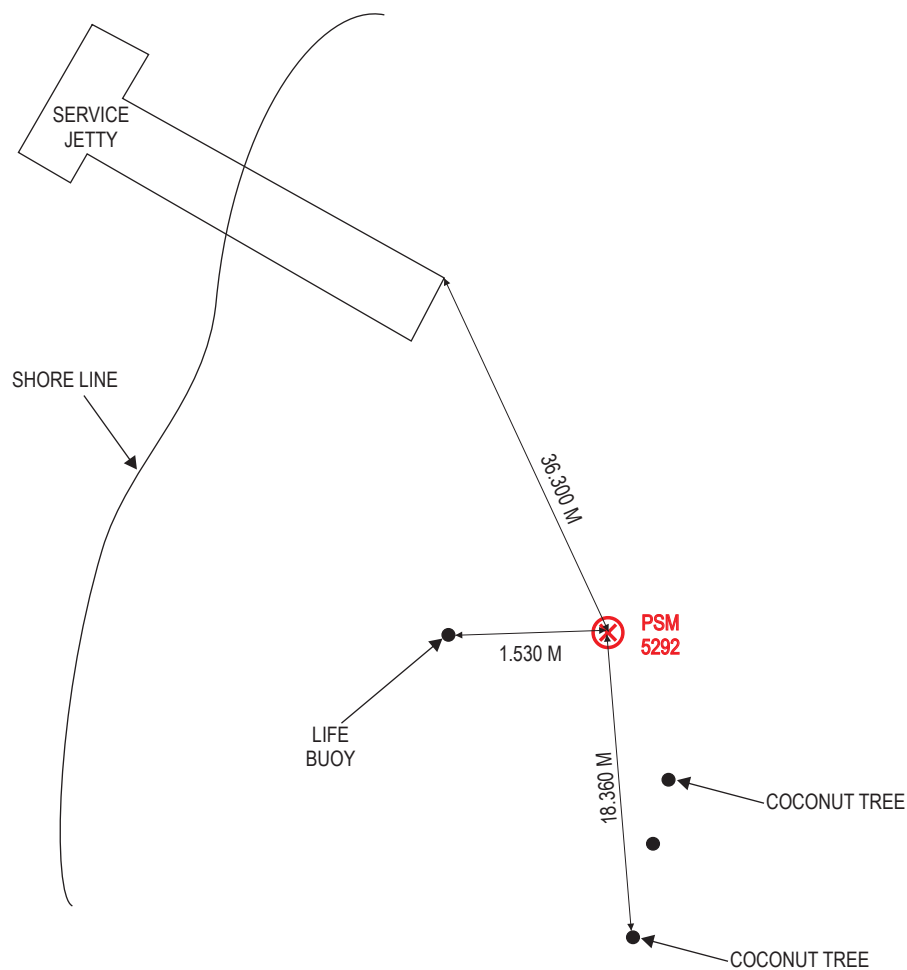
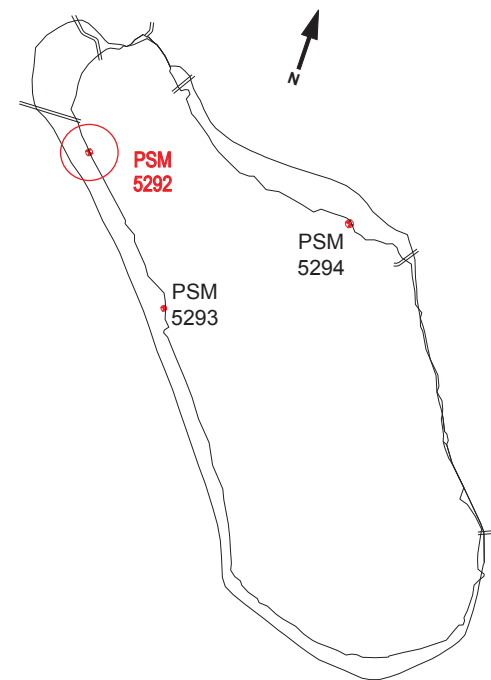
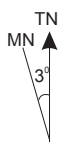
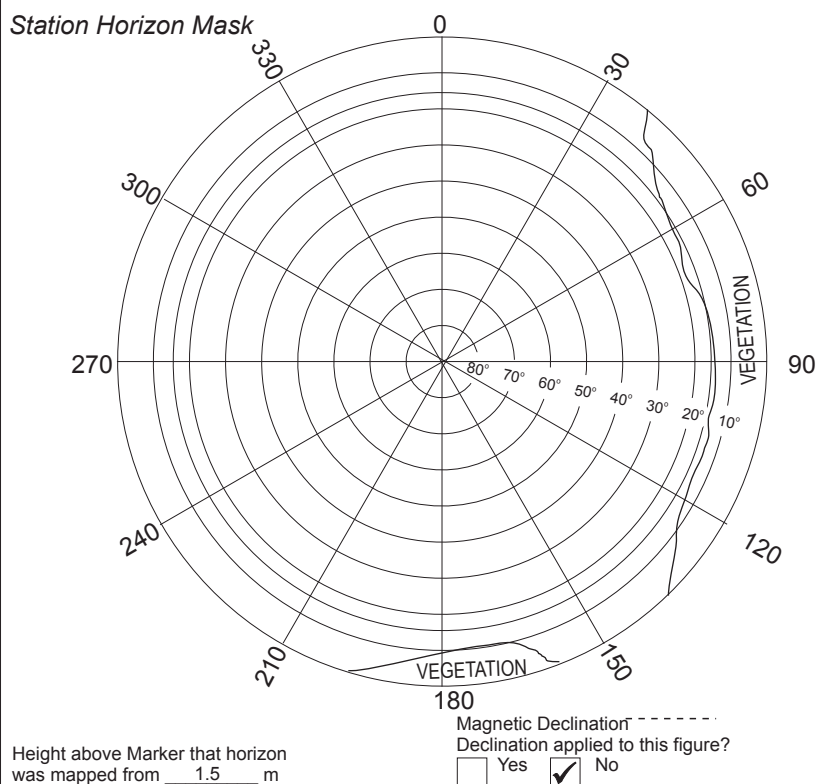
SITE INFORMATION

Station Number

PSM 5292

Station Horizon Mask

Locality



Sketched by: Hussain Thasmeen

Scale: Not to scale

Date: 13 June 2012

SURVEY UNIT,

MINISTRY OF HOUSING AND ENVIRONMENT

Ameeney Magu, Maafannu, Male', 20392, Maldives.

Office (PABX): +(960) 3004300, Fax: +(960) 3004301

Email: survey@mhe.gov.mv

Web: www.mhe.gov.mv



CONTROL POINT DETAILS	Station Number PSM - 5293
Coordinate Information	
Geodetic	Grid
WGS 84	UTM Zone 43
Lat: 1° 49' 1.2468"	E: 322429.703
Long: 73° 24' 13.0716"	N: 200913.710
Ellp Height: -88.85	Orth Height: +1.585

Date: 13 June 2012

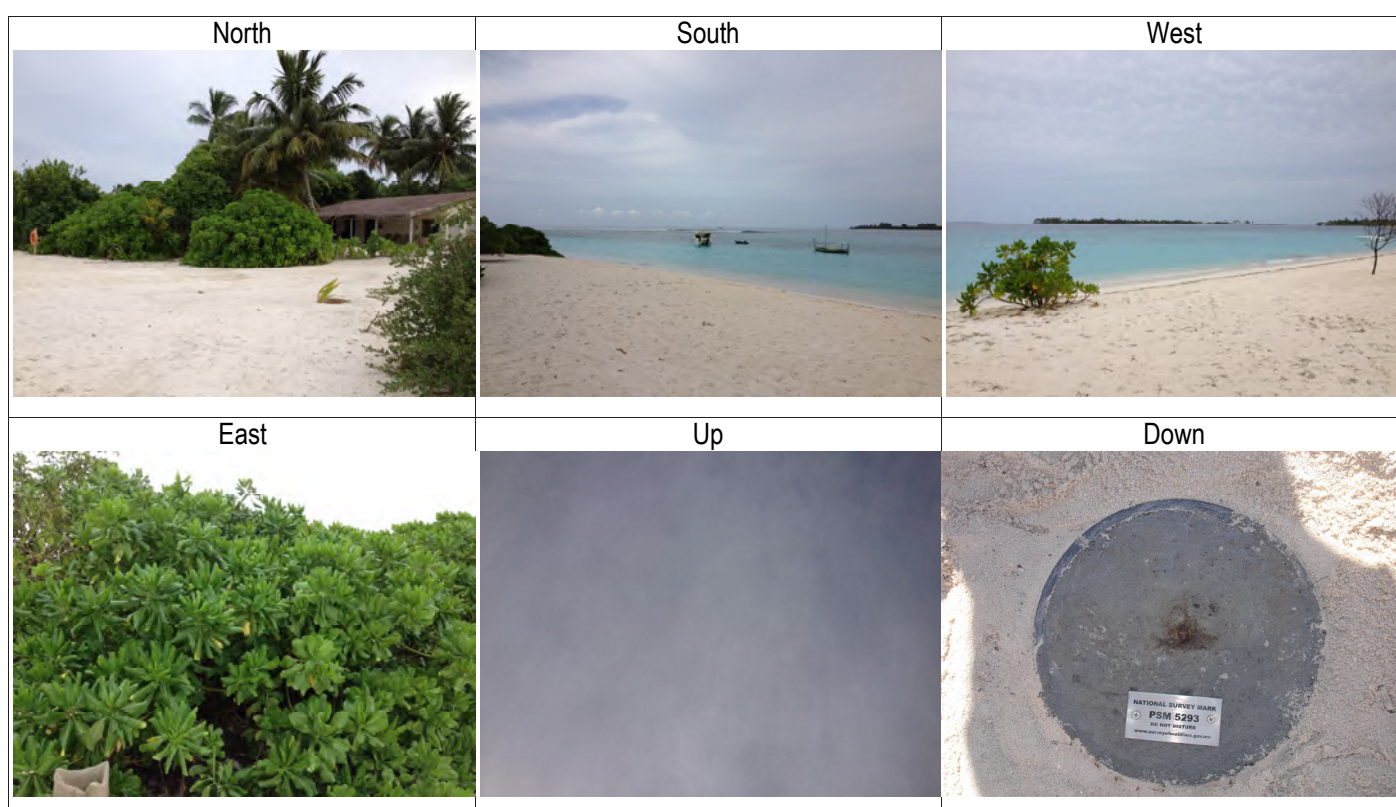
Monument description & method of survey:

- Monument Type A with reference to urban area used as mentioned in the guide line.
- Control stations were fixed using primary closed loop traverse around the island.
- 3 permanently marked station were fixed by GPS

General site condition & access:

Station was fixed in open areas with minimum amount of vegetation and obstacles.

Owner:



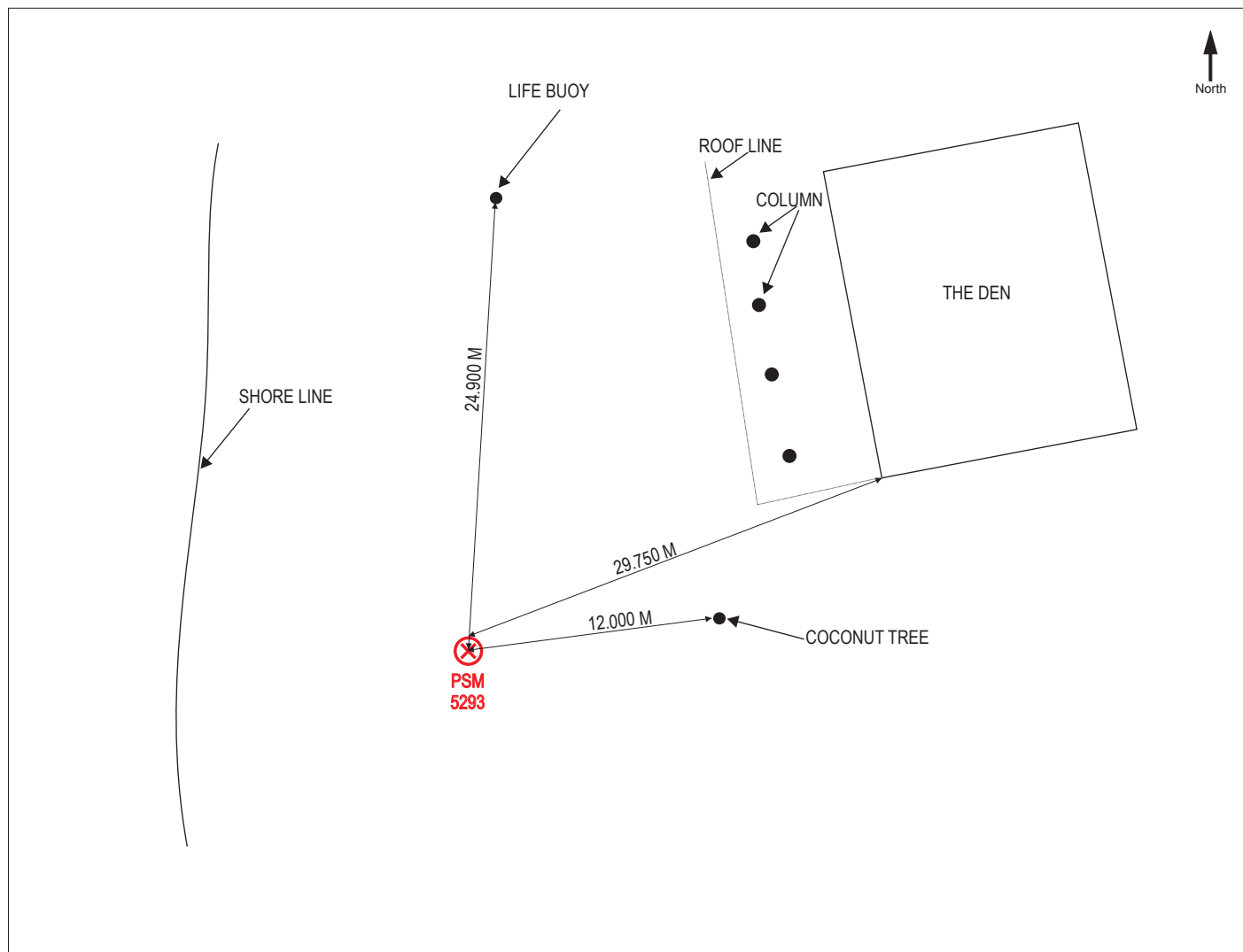
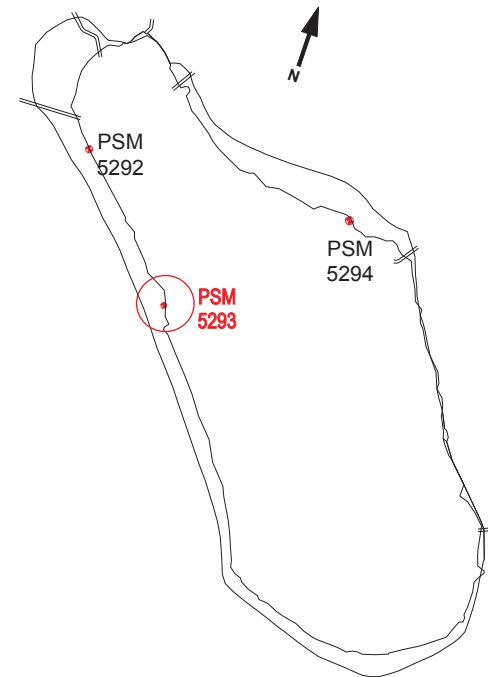
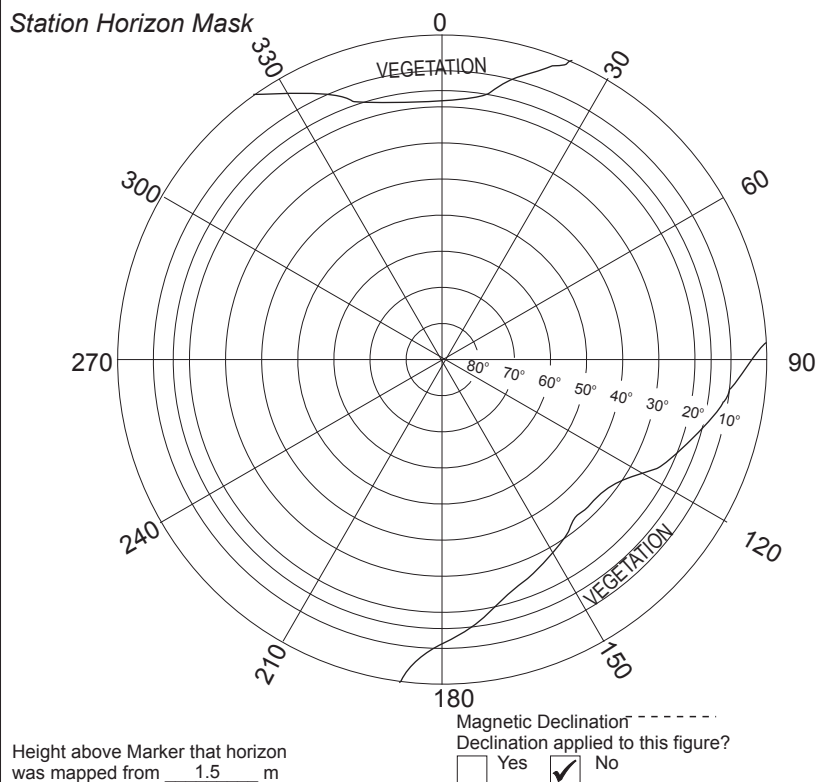
SITE INFORMATION

Station Number

PSM 5293

Station Horizon Mask

Locality



Sketched by: Hussain Thasmeen

Scale: Not to scale

Date: 13 June 2012

SURVEY UNIT,

MINISTRY OF HOUSING AND ENVIRONMENT
Ameenee Magu, Maafannu, Male', 20392, Maldives.
Office (PABX): +(960) 3004300, Fax: +(960) 3004301
Email: survey@mhe.gov.mv
Web: www.mhe.gov.mv



CONTROL POINT DETAILS	Station Number PSM - 5294
Coordinate Information	
Geodetic	Grid
WGS 84	UTM Zone 43
Lat: 1° 49' 6.2142"	E: 322591.867
Long: 73° 24' 18.3126"	N: 201066.153
Ellp Height: -86.91	Orth Height: +1.365

Date: 13 June 2012

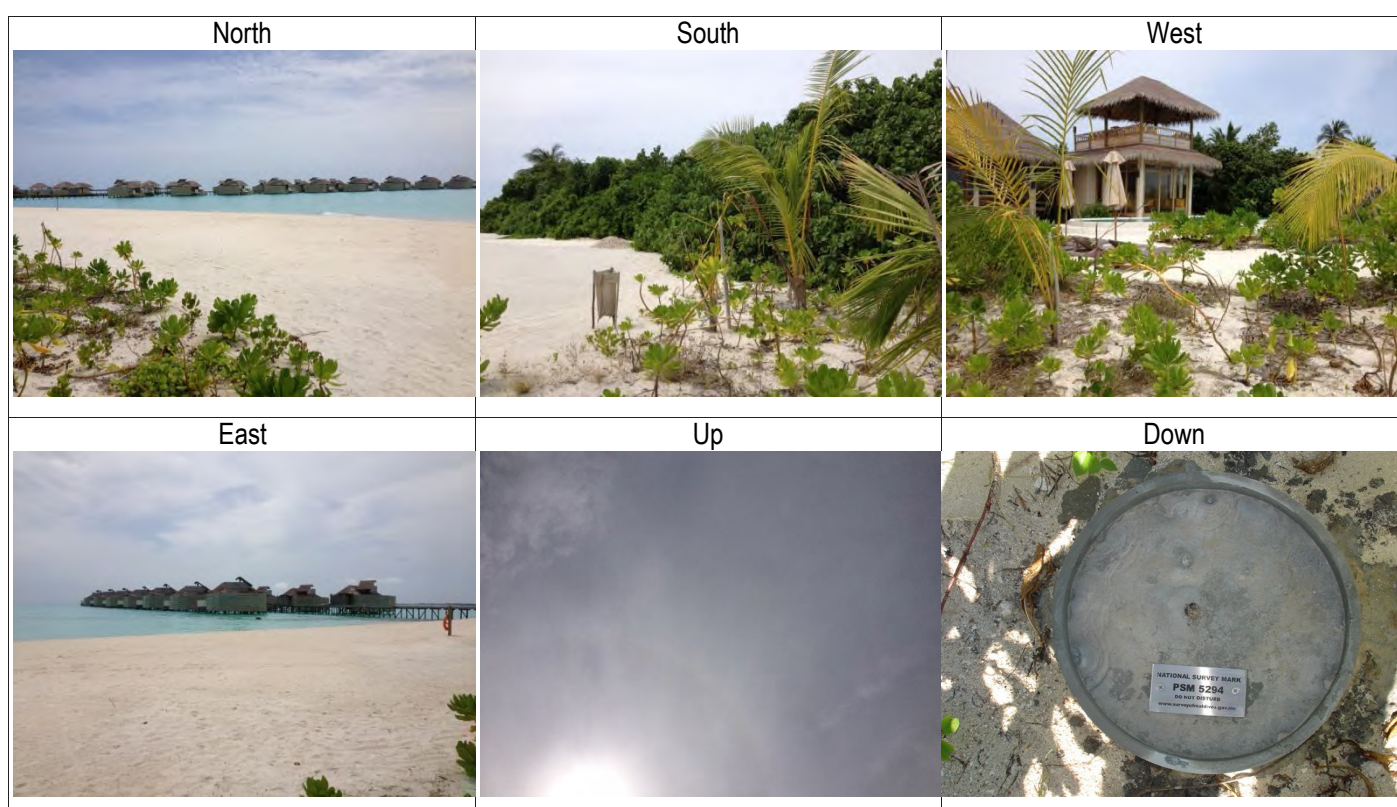
Monument description & method of survey:

1. Monument Type A with reference to rural area used as mentioned in the guide line.
2. Control stations were fixed using primary closed loop traverse around the island.
3. 3 permanently marked station were fixed by GPS

General site condition & access:

Station was fixed in open areas with minimum amount of vegetation and obstacles.

Owner:



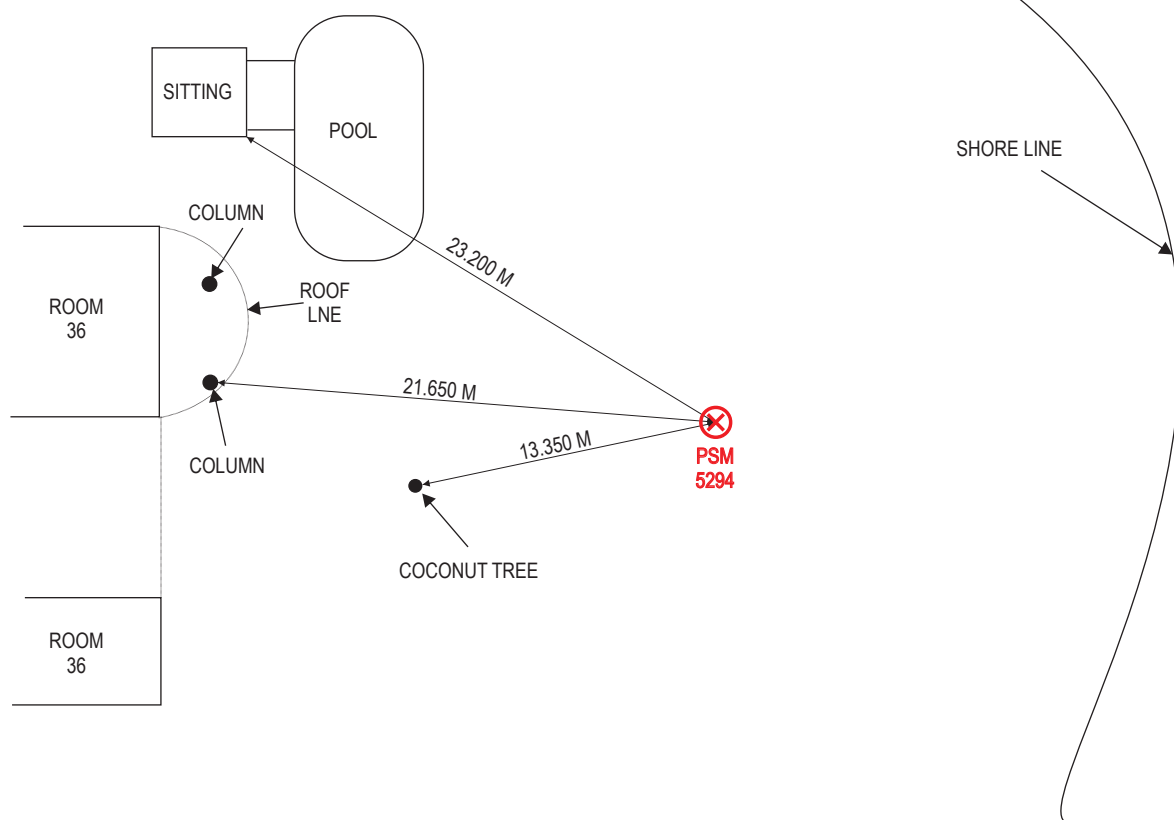
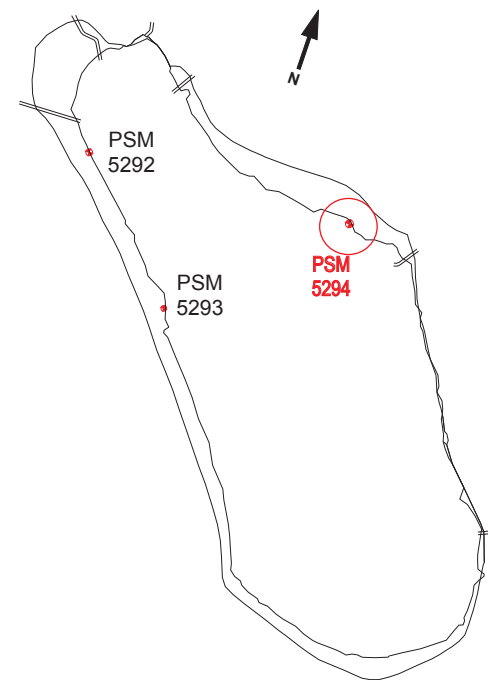
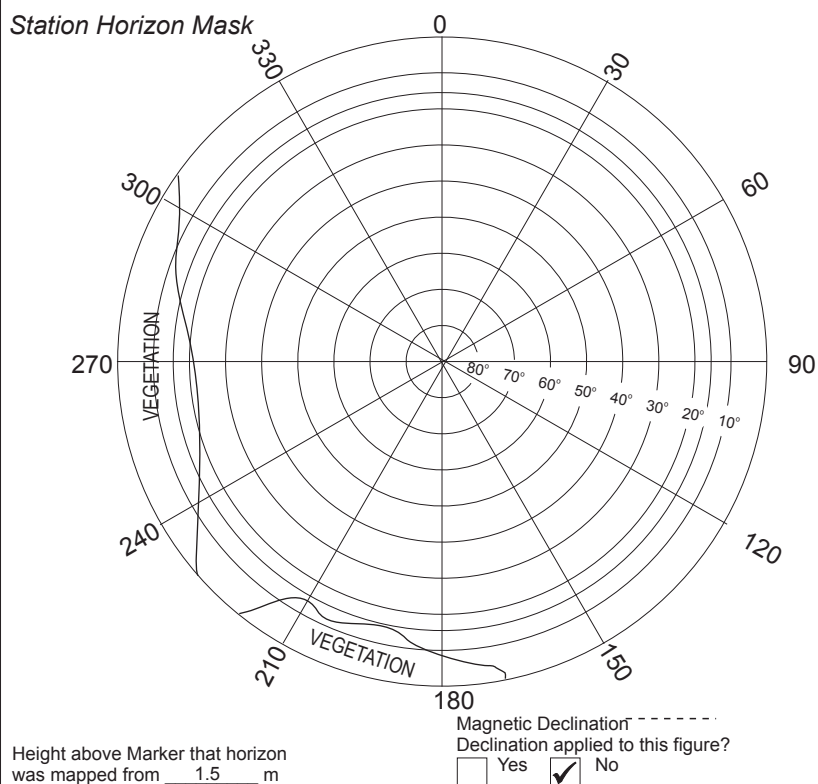
SITE INFORMATION

Station Number

PSM 5294

Station Horizon Mask

Locality



Sketched by: Hussain Thasmeen

Scale: Not to scale

Date: 13 June 2012